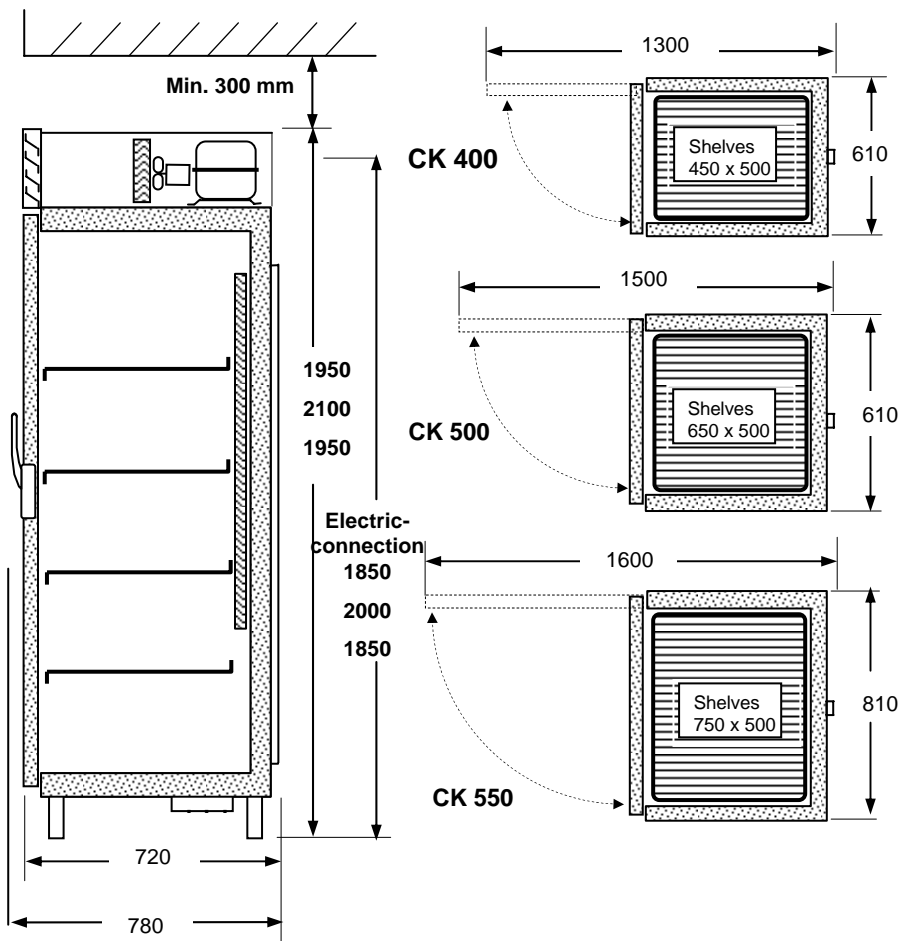


# KylCity Refrigerator

CK-400 CK-500 CK-550



# TECHNICAL INFORMATION



CK-A = incl. compressor

CK-C = excl. compressor

## Design outside

St. steel 2333,

## Design inside:

St. steel 2333

## Insulation:

Freon free polyuretan

## Defrost: Automatic

**Compressor:** Integrated pipe-system

**Door:** Magnetic seal and lockable handles

## Shelves:

Crom

## Ventilation requirements:

420-620 m<sup>3</sup>/h

Model:		CK-A	CK-A	CK-A	CK-C	CK-C	CK-C
		400	500	550	400	500	550
Gross volume:	L	410	470	570	410	470	570
Temp. area	C	-1°+12°	-1°+12°	-1°+12°	-1°+12°	-1°+12°	-1°+12°
Outside temp. max	C	+32°	+32°	+32°			
Cooling cap t <sub>2</sub> = - 20° C	W	240	265	310	240	265	310
Power, same for all	V/hz	230-50/60					
Connection effect	W	200	295	355	10	10	10
Energy use*	Kwh/day	3.6	4.13	4.97	0.05	0.05	0.05
Amp.	A	1.6	1.9	2.2	0.7	0.7	0.7
Sound	dB (A)	49	49	55			
Cooling system		R-134a	R-134 a	R-134 a	R-134 a	R-134 a	R-134 a
Weight	Kg	120	147	173	105	132	158

With delivery compressor, the cooling pipes and cables are located on top of cabinet. Thermostat, magnetic valve and expansion valve are mounted.

\*Time running 14 hours/24 hours

