

KylCity Freezer

CF-700 CF-800

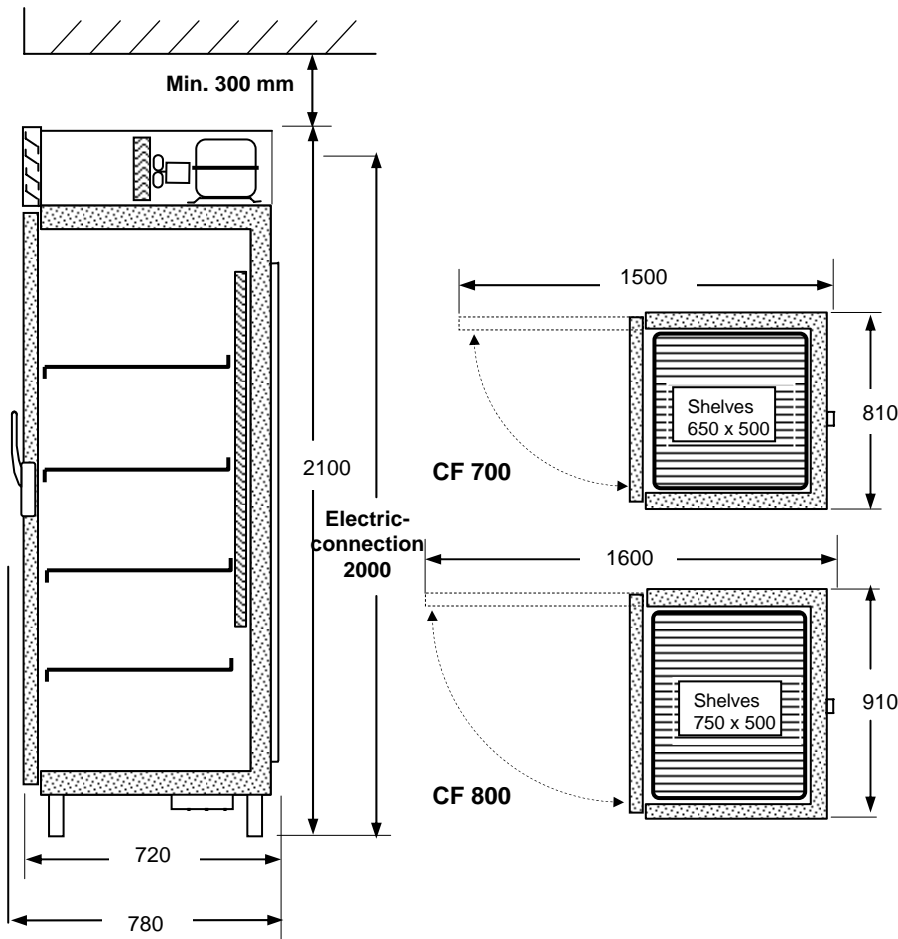


CE

TECHNICAL INFORMATION

CF-A = incl. compressor

CF-C = excl. compressor



Design outside

St. steel 2333,

Design inside:

St. steel 2333

Insulation:

Freon free polyuretan

Defrost: Automatic

Compressor: Integrated pipe-system

Door: Magnetic seal and lockable handles

Shelves:
Crom

Ventilation requirements:
620-800 m³/h

Model:		CF-A	CF-A	CF-C	CF-C
		700	800	700	800
Gross volume:	L	660	750	660	750
Temp. area	C	-30°-10°	-30°-10°	-30°-10°	-30°-10°
Outside temp. max	C	+32°	+32°		
Cooling cap t ₂ = - 20° C	W	510	590	510	590
Power, same for all	V/hz	230-50/60			
Connection effect	W	560	655	17	24
Energy use*	Kwh/day	7.8	9.2	0.08	0.11
Amp.	A	3.5	3.8	1.12	1.54
Sound	dB (A)	61	61		
Cooling system		R-404 A	R-404 A	R-404 A	R-404 A
Weight	Kg	160	185	145	170

With delivery compressor, the cooling pipes and cables are located on top of cabinet. Thermostat, magnetic valve and expansion valve are mounted.

*Time running 14 hours/24 hours

